

SHAPE™ makes in-office patient cardiopulmonary assessment simple.

Quick

- 6 minutes total
- 3 minutes light exercise
- 10 minute schedule block

Simple

- No specialized skills required
- Delegable

Safe

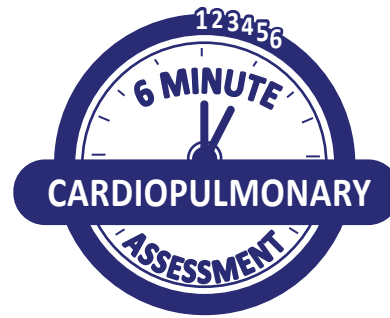
- Over 50,000 tests conducted
- No adverse events reported

Well Reimbursed

- CMS \$160
- APC \$208



In just 6-minutes,



SHAPE™ can help
get to the root cause
of exertional dyspnea.



To learn more about SHAPE
in-office cardiopulmonary assessment,
call 1-888 SHAPE98 (888-742-7398) or
visit www.shapemedsystems.com.

Why is this patient
short of breath?



While climbing stairs...



Tired before finishing
exercise...



Fatigued during
ordinary exertion...

Find out why with a
simple 6-minute test.

Shape Medical Systems
Med Tech Center
5000 Township Parkway
St. Paul, MN 55110

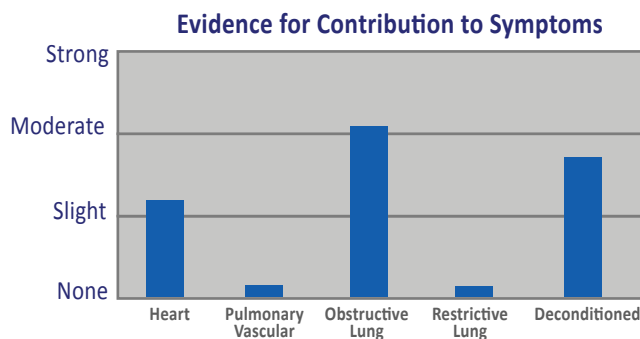


SHAPE™ helps streamline the diagnostic process.

Shape™ noninvasively tests for abnormalities in:

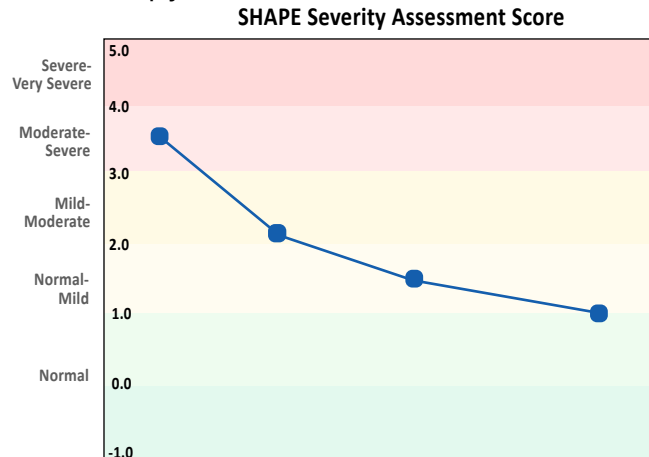
- Cardiac performance
- Pulmonary vascular resistance
- Lung function
- Deconditioning status

Determining the likely source of contributions to dyspnea and/or exercise intolerance.

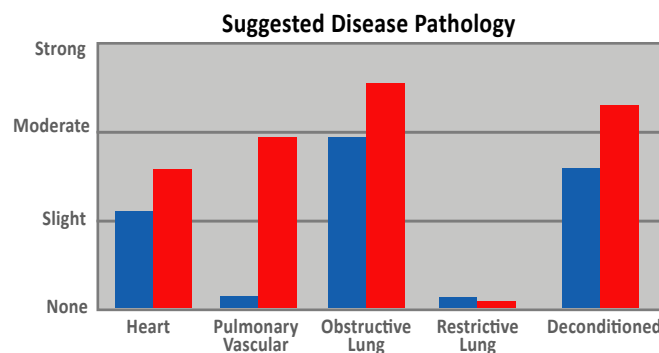


What else does the test determine?

Objective evidence of response to therapy.



Evidence of disease progression or emergence of related co-morbidities such as PH secondary to heart or lung disease.



Indications for testing are broad...

AHA/ATS/ACCP Scientific Clinical Recommendations Guidelines for CPX (SHAPE™ Testing)

Unexplained exertional dyspnea/exercise intolerance possibly due to:

HEART DISEASE

- Systolic heart failure (HFrEF)
- Heart failure with preserved EF (HFpEF)
- Hypertrophic cardiomyopathy
- Suspected non acute myocardial ischemia (CAD)
- Congenital heart disease

LUNG DISEASE

- Chronic Obstructive Pulmonary Disease
- Chronic Interstitial Lung Disease (Restrictive)

PULMONARY VASCULAR DISEASE

- Primary Pulmonary Artery Hypertension (PAH)
- Secondary Pulmonary Hypertension (PH)
- Mitochondrial myopathy
- Deconditioning

Exercise prescription and progress evaluation for cardiac rehab

Evaluation of response to medical, device, of surgical therapy

...and there are no fixed limitations to testing frequency.

